



# FCA News

FOR MEMBERS OF THE FINNISH CENTER ASSOCIATION

March 2014

## CALENDAR OF EVENTS

### FEBRUARY

- 16 Sunday Suomi Koulu 12:30-2:30 pm  
Sunday Senior Housing Meeting 1 pm  
Sunday FCA Annual Meeting 3:00 pm
- 21 Friday Fish fry 5-8 pm, fried cod, baked cod, pizza, soup, salad
- 23 Sunday Open House 1-4 pm
- 26 Wednesday Luncheon 12 noon

### MARCH

- 2 Sunday Suomi Koulu 12:30-2:30 pm  
Sunday Kalevala Day 2:30 pm
- 7 Friday Fish Fry 5-8 pm
- 9 Sunday Brunch 12-1:30 pm
- 14 Friday Fish Fry 5-8 pm
- 15 Saturday 3:30 pm Karkelo Nordic Program, spaghetti dinner, Finnish dessert
- 16 Sunday Suomi Koulu 12:30-2:30 pm
- 21 Friday Fish Fry 5-8 pm
- 26 Wednesday Luncheon 12 noon
- 28/29 Friday/Saturday Flea Market 10-4 pm
- 30 Sunday Suomi Koulu 12:30-2:30 pm  
Sunday Open House 1-4 pm

### APRIL

- 4 Friday Fish Fry 5-8 pm
- 11 Friday Fish Fry 5-8 pm
- 13 Suomi Koulu 12:30-2:30 pm  
Sunday Brunch 12-1:30 pm
- 18 Friday Fish Fry 5-8 pm
- 25 Friday Pasty Prep 10-3 pm
- 26 Saturday Pasty Bake Pick-up 11-4 pm  
Vappu Party 5-12 am
- 27 Sunday Open House 1-4 pm



**RESERVATIONS ARE  
REQUIRED ON  
DINNERS AND LUNCHEONS**

## CHAIRMAN'S CORNER

Sure has been a cold, snowy winter like we haven't seen. Because of this, we had a pipe break that created a small flood at the Center. As it was taken care of quickly, the damage was limited. We are now in the process of having all that was damaged restored.



The rentals are still coming in by phone, internet, walk-ins and referrals. We are also getting requests for 2015. Many renters have complemented our facility and staff.

The Board agreed to nominate Don Reinholm for Finlandia Foundation National Performer of the Year. We know he has an excellent chance to be chosen.

We still do not have enough volunteers, but are grateful for the few we have. PLEASE support our activities, which volunteers have worked so hard to bring to you.

Lois Makee



## APRIL PASTIES

The next pasty bake is Saturday, April 26. Make your reservations by April 21st by signing up on the sheet in the FCA lobby, by calling the Finnish Center, or email at [fca-pasties@comcast.net](mailto:fca-pasties@comcast.net). All orders must be picked up on Saturday between 11 am and 4 pm. Sign up early so you don't miss out.

The cost is \$5 each, but for orders of 10 or more, you can save 10%. Here is how: email your order and phone number to [fca-pasties@comcast.net](mailto:fca-pasties@comcast.net) by 10:00 pm on Monday, April 22. To receive the discount you must pick up your order on Saturday.

Volunteers are always needed to help with the pasty bake. Simply sign up on the sheet in the lobby or contact Paul Rajala, [prajala@comcast.net](mailto:prajala@comcast.net). (Pasty-making volunteers can pick up a free pasty on Saturday).

35200 W. Eight Mile Road  
Farmington Hills, MI  
48335-5108  
Tel: (248) 478-6939  
Fax: (248) 478-5671  
[fcacenter@sbcglobal.net](mailto:fcacenter@sbcglobal.net)  
[www.finnishcenter.org](http://www.finnishcenter.org)

### Officers

Lois Makee, Chairman  
Roger Wanttaja, Vice Chairman  
Robert Waissi, Secretary  
Marlene Ruuskanen, Treasurer

### Board of Trustees

1 Year  
Frank Gottberg, Cortland Book,  
Lila Ball

2 Year  
Carl Aegersold, Olli Lamminen,  
Marlene Ruuskanen

3 Year  
Lois Makee, Roger Wanttaja,  
Robert Waissi

### Alternates

#1 Paavo Kurvi  
#2 Terry Ball

### Financial Review

Eunice Gould, Hilikka Ketola,  
Melissa Biddix-Hill

### Committee Chairpersons

#### Building & Grounds

Carl Aegersold

#### Cultural

Carl Aegersold & Hilikka Ketola

#### Education

#### Finance

Mia Lamminen

#### Gift Shop

Margaret Laurila

#### Membership

Mia Lamminen

#### Publicity & Publications

Nancy Sannar

#### Social

Lila Ball

### SENIOR CITIZEN HOUSING CORPORATION

Paul C. Hendrickson, Chairman

#### *Tapiola Village*

Laura Fultz, Manager

248 471-3802

[Tapiola@ameritech.net](mailto:Tapiola@ameritech.net)

#### *Freedom Square*

Jennifer Bridges, Manager

248 442-7250

## FINDING FINLAND



Eero and Rosann  
Angeli

March 15, 2014  
3:30 pm  
5 pm Buffet

Presented by the  
FCA and FACC

FinnFolk begins the program at 3:30 pm with a variety of music presentations. At 4 pm the "Karkelo Nordic" with Eero and Rosann Angeli will present a program of Finnish historical insights, dance, music, drama and cultural demonstrations.

Complete the afternoon with a spaghetti dinner buffet and Finnish desserts at 5 pm. Followed by music and dancing.

\$15 per person with advance reservation or \$20 at the door. Children under 12 are free. Call the FCA today at (248) 478-6939.

### CELEBRATE KALEVALA DAY

March 2 - 2 pm

**Let's talk Kalevala** and socialize to see what we know and can learn. Bring your family (children) and friends.

There will be activities for children. Light snacks, coffee and juice.

We will have informal discussions, storytelling, and awards. Test your knowledge on the Finnish National Epic "The Kalevala".

Join us for a fun afternoon!

Ladies of Kaleva, Aurattaren Tupa #49  
Knights of Kaleva, Auran Maja #44

### FCA BAKERS

FCA Bakers met on February 13<sup>th</sup> and baked 8 batches of soft, fragrant, tasty pulla. It will be offered for purchase at the Annual Meeting and at the FCA until it's gone. The volunteers were Char Lytikainen, Barb Witte, Betty Taipalus, Hannah Carlson, Lorraine Hannah, and Ilene Yanke.

If you are interested in baking, contact Lorraine Hannah at (248) 338-4165. All are welcome. No previous skill required.

### SUNSHINE LADY

Sending get-well cards, thinking-of-you cards and words-of-encouragement cards to FCA members.

This little known function has been around for many years, and can only be accomplished when I am notified that someone needs a card. Send or call your card requests to the attention of the "Sunshine Lady" at the FCA.

Thank you,  
Eunice Potti Gould



## MARCH IN THE GARDENS

Well March finds us finally getting out in the gardens but just to prune the trees and cut down some of the perennials as the ground is still too frozen for anything else. By the end of the month we hope to start seeds in the greenhouse to make us think that spring will someday get here. When the snow finally leaves and the ground starts to thaw, we know working will be slow and messy as the Finnish Center has areas of standing water to deal with. Walking in wet gardens will compress the soil and make it difficult for the plants and new seeds to come up, so we are always careful to work the perimeter of the garden or place boards to step on to dissipate our weight.

If you see cars near the woodshop on Monday morning, please drop by and join us in our projects, to chat, or have a cup of coffee.

If you have any questions or comments, items to donate, or monetary contributions, please contact me at (734) 546-5190 or [gaylegullen@hotmail.com](mailto:gaylegullen@hotmail.com)

Gayle Gullen  
Finlandia Garden Club President

## FLEA MARKET FRIDAY, MARCH 28 SATURDAY, MARCH 29

10 am—4 pm

Treasures  
old and new,  
jewelry,  
glassware,  
furniture,  
garden items,  
books,  
clothing,  
and much more.



Food,  
fellowship,  
bake sale.

Come  
and  
see  
for yourself.

## GIFT SHOP

Items greatly discounted in March:



Sauna items  
Books  
Tee shirts  
Nylon jackets  
Candy  
Gift shop  
Jewelry

There is something for everyone.

We are now open Monday evenings  
6 pm to 8 pm

## POKER ALL STARS



December was a successful month for poker fund raising. December 22, 23 and 24, December 30, 31 and January 2.

December poker all stars are: Marlene Ruuskanen, John Saarinen, Tima Bremer, Mark Rikkonen, Neil Lehto, Neil Manley, Bruce Mikko, Paul Rajala, Nancy Sannar, Nobert Leppanen, David Sharpe, Cortland Book, Ilene Yanke and Marge Sorenson. Thank you all!

Gene Belttari

## MEMORIALS

When making a memorial donation, you may direct it toward a specific fund. The funds available are: FCA General Fund, Library, Scholarship, Hoi-jakat Folk Dancers, Drama Club, Finn Weavers, Garden Club, Soittoniekat/FinnFolk Musicians and Finnish American Singers.

If a donation is undesignated, it goes to the General Fund for expenses of the Center.

The family of the deceased may direct undesignated donations toward a specific fund (up to one year after date of death).

Please make your check out to the Finnish Center Association and send donations to: FCA, 35200 West Eight Mile Road, Farmington Hills, MI 48335. Donations received by the 5th of each month will be published in the next month's newsletter.

You may also direct your donation toward the Elders' Housing, but then your check must be made out to FCA Senior Housing Corp.

Please include full name, address, date of death of the deceased as well as the name and address of the next of kin to whom the acknowledgement card is to be mailed. **Also include all names of donors.** If the deceased is a non member of the FCA please include city and state of residence.

If you know of a member, parent or child of a member who has passed away, please call the FCA at (248) 478-6939.

In memory of FCA life member **Carl W. Taipalus** (1/30/08) a donation has been made by Michele Taipalus.

In memory of FCA life member **Edith "Edie" Kaarlela Raski** (12/12/13) donations have been made by Larry & Karen Koski-Roe, George Putkela, Alice Manley, Charlotte Lytikainen, Dolores & Will Rajala, Hannah Carlson, Millie Harju, Lillian Heikkinen, Margaret Laurila, Connie Fosness and Dagmar & Gerald Malstrom.

In memory of FCA life member **Vivian Peters** a donation has been made by Carole Hardy.

In memory of FCA life member **Eleanore Keranen** (7/10/13) a donation has been made by Robert & Colleen Kowalske.

In memory of FCA life member **Joyce Kaiponen Juntunen** (11/18/13) donations have been made by Margo Maclean and Dolores & Will Rajala.

In memory of **Joyce Kayfes** (12/24/13) a donation has been made by Michele Taipalus.

In memory of **Peta Pikula Elias** a donation has been made by Elizabeth Groome.

In memory of FCA life member **Seija Mannila Usitalo** (1/4/14) donations have been made by Neil Manley, Maria Hill, Marlene Ruuskanen, Kathryn Hill, Dennis Usitalo, Chris Vartanian, Lillian Niemi, Dolores & Will Rajala, Dr. Tom & Mirja Przybylski, Dagmar & Gerald Malstrom and Connie Fosness.

In memory of FCA life member **Walfred "Tony" Nelson** (12/8/13) donations have been made by Steven & Linda Nelson, Kelly & Joe Hammond, Darlene Siekas, Martha Isaacson, Barbara & Chuck Harris, John & Sandy Erickson, Dorothy Erickson and Arbor Green Activities Committee.

In memory of **Arturo Mojares, MD** (1/8/14) of Bloomfield Hills, donations have been made by Dr. Tom & Mirja Przybylski, Pearl & Ray Wanttaja.

In memory of FCA life member **Reuben Carlson** (11/20/13) donations have been made by Hannah Carlson, Kim & Dan Carlson, Peg & Kevin Carlson, Connie Fosness and Betty & Leonard Holmbo.

In memory of FCA life member **Anne Aho Paulson** (12/10/13) a donation has been made by Hannah Carlson.

In memory of FCA life member **Rigmor Cuolahan** (2/7/14) donations have been made by Lois Makee and Pearl & Ray Wanttaja.

In memory of **Les Kent** (1/11/14) of Wixom, a donation has been made by Dagmar & Gerald Malstrom.

(continued on page 6)



## GOING PLACES

**Irish Tenors at the Soaring Eagle**, Monday, March 17, \$38. You will receive a \$10 coin coupon and a \$5 food voucher. A free show by the talented Irish Tenors is included. To receive the casino package you must fill out a coupon which you will find on the flyer at the FCA. You must also have a valid photo ID. Combination with Nardineers. Depart 8:30 am and return about 9:30 pm. Get your money in soon on this one as Evelyn has to order tickets the end of January.

**Flavors of Frankenmuth**, Tuesday, May 13, \$78. There is more to Frankenmuth than just chicken dinners. This trip begins with lunch at the Frankenmuth Brewery which is one of the oldest brewery's in Michigan and the second oldest brewery in the nation. Next we go on a leisurely cruise on the Cass River. Finally we get to go in the Bavarian Inn kitchen to try our hand at making their famous apple strudel and we get to taste some too. There will also be time for shopping. Combo with Nardineers. Depart at 10 am and return about 6:30 pm.

If you leave your car at the FCA while on a trip, please park at the north end of the property. If you park near the main or lounge entrances you are using spaces needed for other functions.

Pearl Wanttaja  
(248) 541-0054



### Neil J. Lehto

Attorney and Counselor At Law

nlehto@sbcglobal.net

4051 Wakefield Road  
Berkley, Michigan 48072

(248) 545-1753 (Phone & Fax)

## MEMORIALS (continued from page 5)

The FCA also wishes to extend condolences to the family and friends of:

FCA life member **Karl Sjogren** (6/11/13)

FCA life member **Lucille Nelson Aittama** (1/15/14)

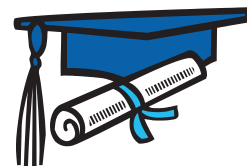
Corrections:

In memory of FCA life members **Ainard** (11/9/76) and **Mamie** (8/12/97) **Liimatta** donations were made by Terry & Lila Ball and Walt & Linda Hart.

In memory of **Fred** (10/9/59) and **Elaine** (7/3/71) **Liimatta** donations were made by Terry & Lila Ball and Walt & Linda Hart.

In memory of **Albin Liimatta** (4/4/13) donations have been made by Terry & Lila Ball and Walt & Linda Hart.

## SCHOLARSHIPS



Those interested in applying for scholarship money can find the information listed on the FCA website ([www.finnishcenter.org](http://www.finnishcenter.org)) or can receive copies of the application at the Finnish Center.

The completed application and information must be received at the Finnish Center by March 14, 2014.

### E & G Heating

Heating and Cooling  
Service and Installation  
Mostly Residential

(734) 812-6318  
Greg Makila



## FROM THE FCA LIBRARY



If your ancestors came from Finland, but not from along the Oulu/Vaasa coastline, perhaps they came from east of there, from Suomussalmi, which also saw large emigration. Suomussalmi is almost directly east of Oulu (still in Oulunlääni), near the Russian border, at what is called Finland's "waist", for this is Finland's narrowest area. Already in the early 1900's, when the bulk of the emigration took place, there would have been fairly easy access from Suomussalmi to Oulu, and from there to Hanko, the point of embarkation to the U.S.

The 1900 population of Suomussalmi seems to be unavailable, but currently the population (as of August 2013) is 8,940. It covers an area of 2,261.63 sq. miles, of which 226.65 sq. miles is water. The municipality is in the Kainuu region and is unilingual Finnish. Ämmäsaari is the biggest built-up area in the municipality. Suomussalmi has been home to some famous people, including the author Ilmari Kianto, Formula One racing car driver Heikki Kovalainen, composer Osmo Tapio Räihälä and the hockey player Janne Pesonen.

The Suomussalmi area saw some of the fiercest fighting during the Winter War (1939-40). It was the objective of the Soviet Army to advance to Oulu, effectively cutting Finland in half. They did not accomplish this; the Finns gave them strong resistance. Had they been successful, it would have been disastrous for the Finnish army, for they would have had to fight on two fronts.

Several battles were fought in the area around Suomussalmi, the most important being the Battle of Suomussalmi and the Battle of Raate. In these battles, the small Finnish forces, under Colonel Hjalmer Siilasvuo, defeated the vastly superior Soviet forces. The Finnish troops' equipment was better suited for warfare in the deep snow and freezing temperatures, compared to the Soviets' with their heavy equipment and lack of proper winter clothing. The Finnish army had high morale. They were defending their homes, religion, their mother-land, whereas the Soviets had only political reasons for their attack.

During this conflict, the Finnish army captured a large amount of sorely-needed military supplies, including 43 tanks, 71 field guns, 260 trucks, 1,170 horses, 29 anti-tank guns and other weapons. This gave a decisive boost to their morale. This is often cited as an example of how a small force, properly led and fighting in familiar terrain, can defeat a vastly numerically superior army.

The Winter War was over in 1940 and the Soviets claimed a victory, but as one gentleman in Finland told me, "They say we lost the war, but you will notice that we are FREE!"

Alvar Aalto sculpted a memorial named "The Flame" in Suomussalmi for the Finnish soldiers who died. In addition, a quite remarkable monument, designed by Erkki Pullinen of Suomussalmi, was erected in 2003 very near the Russian border where some of the most ferocious battles were fought. It is a bilateral memorial to the thousands, both Finnish and Russian (including some from the Ukraine and other nationalities) who fell in those battles. The total area of the memorial is around 30,000 - 40,000 square meters. In what became a field of natural stones, one stone was erected for every soldier who died; there are about 20,000 memorial stones. It is an amazing sight! In the center of the field of stones is a monument entitled "Wide Embrace", which stretches its protective wings over the silent field of stones. The monument contains 105 brass bells, one for each day of the Winter War. When the wind blows the bells sound a quiet message of the mindlessness of war. A text on the monument reads "Although man dies -- his memory lives on." The memorial was financed by the European Union, the municipality of Suomussalmi and the Employment and Economic Development Centre of Kainuu.

Near the monument is the Winter War Museum, Raatteen Portti, which has a collection of artifacts, photographs, maps and models which describe the battles that took place in that area. Actu-

(continued on page 8)

### Library (continued from page 7)

the Winter War monument is part of the exhibition.

If you visit Finland, this area is worth a visit. Suomussalmi is 331 miles from the Helsinki-Vantaa airport.

If you want to read an engaging account of the Winter War, you will find it in **FROZEN HELL** by William F. Trotter, which we have in our library.

Lillian Lehto, FCA librarian



Wide Embrace Monument

## FINNISH AMERICAN SINGERS PROFILE

This month on Mar 16th, St. Urho's Day, Finnish culture is celebrated at this scribe's home with friends. Even though only one Finn is present, my husband, we all joyfully share traditional Finnish food and enjoy the opportunity to celebrate all things Finnish! **Jerry (Gerald) and Dagmar (Erickson) Malstrom** have celebrated the Finnish culture throughout their forty-two year marriage, proudly proclaiming their Finnish and Swedish roots. Long participation with the FCA and FASM demonstrate their eagerness to share their traditions. Both were born in Detroit but their families were from the Upper Peninsula Copper Country. Gerry's great-grandfather Malmstrom (note the extra "m") came to America in 1880. Although the fact that the family spoke Swedish as well as Finnish and the spelling of their name raised questions in the family that he was actually Swedish, Jerry claims *his* roots as Finnish! Eventually his great grandfather went to Astoria, OR to preach and established an Apostolic Lutheran Church there in 1907. Jerry's grandfather, who was fourteen when the family moved here, stayed in South Range, Michigan. Jerry's maternal grandfather ran a boarding house and in 1902, placed an ad for a cook. He married the cook he hired, and eventually Jerry's mom was one of ten children! Jerry's aunt suggested that he meet his "cousin's nice, young, Swedish Sunday school teacher." That suggestion led to their 1972 wedding in the same church Dagmar's parents had married, St. Olaf Lutheran Church in Detroit. All of Dagmar's grandparents came from Sweden to the Copper Country. One grandmother, born in 1889, came alone at sixteen, made her way North, and lived with relatives there. Although Dagmar's father's family had settled in Laurium, the whole family did move to the Detroit area in 1922.

In high school, Jerry had planned to go into commercial art. He *did* work at Hudson's creating window and store displays, perhaps those fascinating windows we remember. However, he began to work for the city of Detroit through a Federal program, the Neighborhood Youth Corp. He was a counselor for young people in sponsored work training programs, visiting training sites and talking to groups in schools all over the city. Eventually he worked for the City of Detroit in various customer service type positions where his friendliness and ability to engage people was key.

Dagmar utilized her talents in organization after graduation doing clerical work for 21 years at GM "on the boulevard." Leaving there, she worked as a teller for Chase Banks for 14 years. Both of them enjoy helping

(continued on page 9)



**FINNISH AMERICAN SINGERS PROFILE** (continued fro page 8)

others, which showed by Dagmar's involvement with Meals on Wheels and Jerry's commitment to the Big Brother Program for many years. Both have been active in the Kaleva Lodge association for many years.

Buses, trains, and automobiles have enabled the couple to travel to most of the FinnFests held throughout the United States. Occasionally the trips have been made as members of the FASM group, singing at their destinations. Oregon, Washington, Minnesota, North Dakota, and Pennsylvania were trips that stood out for them, as well as the times FinnFest has been held in Northern Michigan when they were able to combine the festival with visits to their families. Each summer a week or so vacation was enjoyed there - visiting relatives, viewing their grandparent's still-standing homes, and leisurely de-stressing in familiar environs. Throughout their marriage they have enjoyed trips to Hawaii, Myrtle Beach, Boston, and Cape Cod but have not gone to Europe as a couple. They would love to go to Scandinavia and this scribe urged them to take Dagmar's travel-agent sister up on her frequent email offers to book them a cruise there! They would love it!

Submitted by Scribe, Katy Koskela

This interview was based on the following questions:

1. When did your ancestors come to America? Where did they come from? And Why?
2. When and where were you married? What's the full name of your spouse? How did you meet?
3. What has been your primary adult occupation? How long? How did you get it?
4. What is or was your spouse's occupation? How do you feel about it?
5. What are your hobbies, recreational interests? Special skills you developed?
6. Have you traveled to foreign countries? When and where?
7. What achievements have given you the most satisfaction? When and where?
8. Is there something you would like to achieve but haven't done yet?



Dagmar and Jerry Malstrom

### EASTER IN FINLAND

Easter in Finland is a peaceful religious holiday celebrated among family and friends. This is the time of year when people are eagerly awaiting the first signs of spring. Depending on whether the holiday is in March or April, the first crocuses may already be blooming. People try to help the spring along. They grow grass in dishes on the windowsill. On Palm Sunday, children go from door to door reciting a rhyme wishing health during the coming year. They give decorated willow sticks in exchange for candy. There are a few traditional Easter foods. People decorate Easter eggs, of course. And you might be offered a traditional dish in the form of malt porridge, or 'mämmi', served with cream and sugar.

For a mämmi recipe: <http://cookingfinland.blogspot.fi/2011/04/mammi-traditional-finnish-porridge-or.html>

## FINLAND TODAY

First, Osmo Vanska, the conductor of the Minnesota Orchestra, received a Grammy Award. The Grammy was for the orchestral recording for its album of Sibelius' Symphonies No. 1 and No. 4.

Environment Minister, Ville Niinisto, has announced that the government is proposing two new national parks in Finland, one in Etela Konnevesi in central Finland, and the other in Teijo, which is in southwest Finland. said Niinisto, "It is important for national parks to have a positive impact on tourism and local employment."

There are now 52 municipalities in Sweden that offer services in Finnish. In the year 2000, the first Finnish language services were offered in the Haaparanda area of Sweden. Currently the percent of Sweden that is of Finnish Heritage is 7.5%, or about 710,000, while Finland has a Swedish speaking minority of just under 5%. As the second official language of Finland, Swedish is protected by law and services are provided in all the municipalities in Finland. But that may not be enough in Finland, because in cities like Vantaa, city services in a 3rd or even a 4th language may be needed. In Vantaa, there are more Russian speakers than there are Swedish, and then there almost as many native Estonian speakers as there are Swedish.

The Finnish Army is looking for a "Few Good Women", so says Major Vesa Tuhkanen, Armed Services Branch Director. The Army is looking for women to serve in the international crisis management operations. Currently about 700 women annually volunteer to serve in the Finnish army. In February, about 5,000 recruitment letters were sent to the Pirkanmaa area of Finland, and if successful, a similar letter will be sent out to the whole country next year. "The current generation of young men is sufficient to meet the Defense Forces' general needs, but women are also needed as professional soldiers, especially in the area of crisis management. Certain tasks in international operations require women," explains Major Tuhkanen.

"It's a dream come true", so says Finnish men's basketball coach, Henrik Dettman, after learning that Finland will be playing in the same group as the USA in the basketball World Cup tournament in August-September to be held in Spain. Finland will be in Group C along with USA, Turkey, Ukraine, Dominican Republic, and New Zealand. Finland's first game is on August 30, against the USA in the Basque city of Bilbao.

At the New Music Competition held at Espoo's Barona Areena, the winner was Softengine, a band made of teenagers from Seinajoki. The band will represent Finland at this year's Eurovision Song Contest to be held in Denmark in May. They will first play in the semifinal on Thursday, May 8, 2014, and if they make it, the Eurovision finals are on Saturday, May 10, 2014. Their winning song is "Something Better".

And finally, Heikki and Hilma bought an old house near Calumet in U.P. from a couple of elderly sisters. Everything was fine until when winter approached, and then they became concerned about the lack of insulation on the house.

Said Heikki to Hilma, "If those old women can live here for all those years, so can we."

Then one December night, the temperature dropped to zero, and when Heikki and Hilma woke up, the interior walls of the house were covered with frost. So Heikki decided to call the sisters to ask them how they kept the house warm during the winter.

After a brief conversation, Heikki hung up the phone and said to Hilma, "Well, they said that ever since they bought the house, some thirty years ago, they have gone to Lake Worth, Florida to spend the winters."

Markku Ketola  
[marketola@yahoo.com](mailto:marketola@yahoo.com)

## SOCIAL COMMITTEE

Wow, what a winter! I hope everyone is keeping warm and enjoying the beauty of Michigan from the inside. Does it bring back memories for you Yoopers of putting wood in the stove? How blessed we are to have the modern convenience of gas furnaces.

We are keeping busy around the Finnish Center with events and are very grateful to everyone who challenged the cold weather to continue support. In spite of the cold our monthly luncheon was well attended. Please always remember that the Monday preceding the Wednesday luncheon is the deadline to make reservations. We have had several no shows recently for luncheons. This results in excess food and expense. Beginning in February there will be a charge of \$10 if you do not cancel your reservation.

We all enjoyed the showing of the DVD "Ice Bridge: Mackinac Island's Hidden Season" on our new screen. The Social Committee is now raising funds to purchase items to enhance our events and the Finnish Center. If you would like to buy a copy of the DVD please see Terry or me.

Lila and Terry Ball



## ADVERTISING RATES

DEADLINE:	DEADLINE FOR MARCH ISSUE IS FEBRUARY 5TH
EDITOR CONTACT INFO:	PAUL RAJALA
LAYOUT AND DESIGN:	NANCY RAJALA
E-MAIL:	<a href="mailto:nrajala@comcast.net">nrajala@comcast.net</a>

### *FCA NEWS ADVERTISING RATES & SPECIFICATIONS*

FCA News is published 11 times annually (June-July issue is combined) by and for members of Finnish Center Association. Circulation is about 1,000 of your fellow FCA members, and others, per issue.

**Deadline/payment for ad is the 5th of the month preceding publication.**

Column (ad) width is 2-1/4" for rates quoted below. Other sizes quoted on request.

Rates for a camera-ready, black & white ad, per three month period:

3 month rate	.....1" ad - \$30.00.	1.5" ad - \$45.00	2" ad - \$60.00
Pay for full year	.....1" ad - \$100.00.	1.5" ad - \$150.00	2" ad - \$200.00

**READ THE FCA NEWSLETTER ONLINE**

# FINNISH CENTER ASSOCIATION



35200 W. Eight Mile Road  
Farmington, Hills, MI 48335-5208

## FCA MEMBERSHIP APPLICATION OR \_\_\_\_ RENEWAL

Date \_\_\_\_\_ Phone: \_\_\_\_\_ email: \_\_\_\_\_

Applicant \_\_\_\_\_

Applicant/Spouse \_\_\_\_\_

Address \_\_\_\_\_

City \_\_\_\_\_ State \_\_\_\_ Zip code \_\_\_\_\_

Signature \_\_\_\_\_ Are you of Finnish descent? \_\_\_\_\_

- Annual membership, single, one vote ..... \$50.00
- Annual membership, senior\* or youth\*, one vote ..... \$25.00
- \* Senior, over 65 years, youth under 30 years of age
- Annual membership, couple, two votes ..... \$100.00
- Annual membership, family, one vote ..... \$75.00
- Life membership, one vote ..... \$500.00
- Life membership, senior, one vote (see membership for details)

Amount enclosed \_\_\_\_\_

Please make check payable to FCA and send to Finnish Center Association,  
Membership, 35200 W. Eight Mile Road, Farmington Hills, MI 48335-5108

Recommended by: \_\_\_\_\_

### GK Photos

Glenn Kujansuu  
Photographer  
(248) 436-1276



Weddings - Reunions  
Parties & More

gkphotos@drysteamart.com

**10% Discount to FCA members**

### FCA Senior Living

One and two bedroom rentals  
Convenient, safe and affordable in  
highly desirable Farmington Hills, MI

Contact us at:

Tapiola Village (248) 471-3802

Freedom Square (248) 442-7250

[www.fcaseniorhousing.org](http://www.fcaseniorhousing.org)



### THAYER-ROCK FUNERAL HOME

33603 Grand River,

Farmington, MI

(248) 474-4131

Paul N. Potti, Director